



ROITHNER LASERTECHNIK GmbH

WIEDNER HAUPTSTRASSE 76
TEL. +43 1 586 52 43 -O. FAX. -44

1040 VIENNA

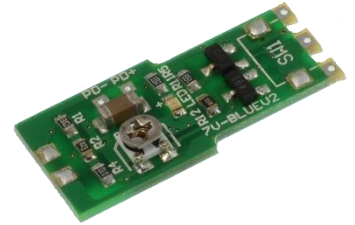
AUSTRIA

OFFICE@ROITHNER-LASER.COM



EU-43

- Laser diode driver
- For blue and green laser diodes
- For external PD only
- 3-5 VDC



Description

EU-43 is a small and inexpensive driver board for continuous wave (CW) operation of blue and green laser diode with **external PD**. The **Automatic Power Control (APC)** circuit allows for a laser diode current of up to 200 mA, adjustable by means of a potentiometer. **EU-43** utilizes an **up-converting current logic**, and supports **3-5 VDC supply voltage**.

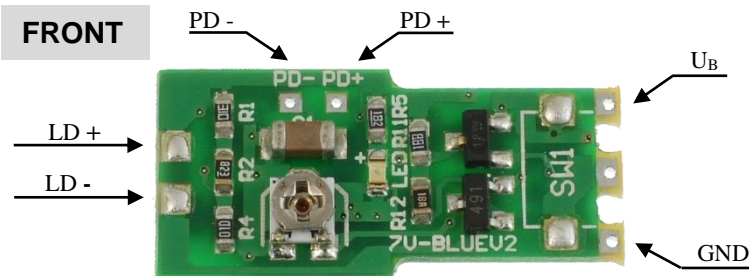
Characteristics

Parameter	Symbol	Values		Unit
		Min.	Max.	
Supply Voltage	U_B	3.0	5.0	V
Laser Diode Current	I_{LD}		200	mA
Dimensions (H x W x D)		24 x 11 x 5		mm
Operating Temperature	T_{CASE}	0	50	°C
Storage Temperature	T_{STG}	-20	70	°C



PIN Configuration

EU-43



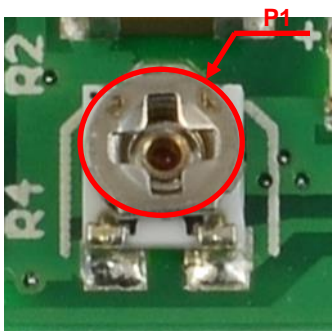
PIN	Function
U_B	Supply Voltage +
LD +	Laser Diode Anode
LD -	Laser Diode Cathode
PD +	External PD Anode
PD-	External PD Cathode



Operation Note

EU-43

FRONT



Potentiometer	Function
P 1	laser diode current adjustment

Turn left (counter clock wise) = increase current

Turn right (clock wise) = decrease current

Caution: P1 is a SMD type trim potentiometer, do not overturn its end points

Caution: External PD must be connected, else driver will raise to **UNSPECIFIED HIGH** current