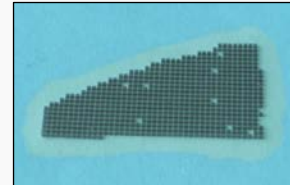




ELC-690-25



Description

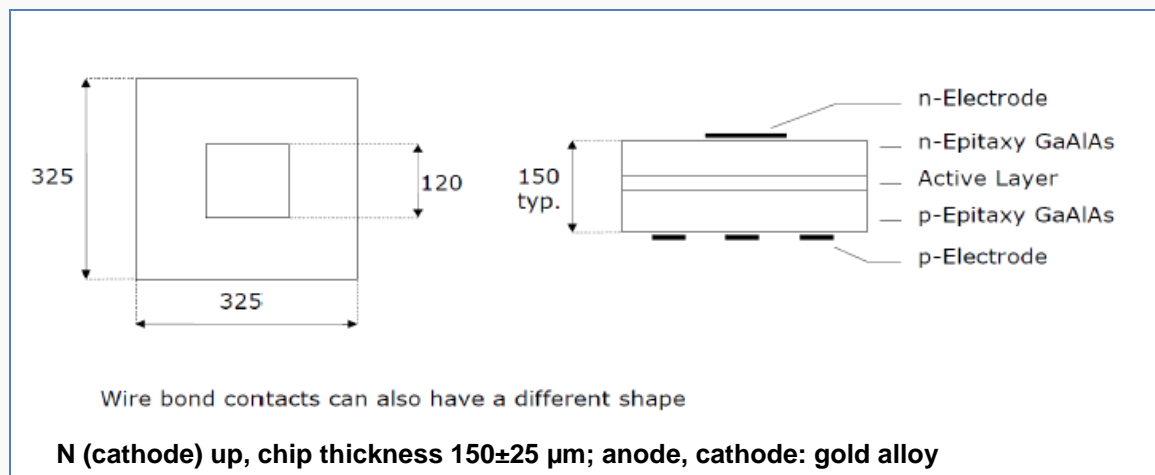
ELC-690-25 is a AlGaAs based 325x325 μm bare LED chip die of double hetero structure in dual combination (DDH) with gold plated electrodes. It has a typical emission wavelength of 690 nm. . It is delivered on adhesive film with the wire bond side up.

Characteristics ($I_F=20\text{mA}$, $T_{AMB}=25^\circ\text{C}$)

Parameter	Symbol	Min.	Values		Unit
			Typ.	Max.	
Emission Wavelength	λ_{peak}	680	690	700	nm
Forward Voltage	V_F		1.85	2.2	V
Reverse Voltage ($I_R=100\mu\text{A}$)	V_R	5			V
Radiant Power	P_O	2	2.8		mW
Rise/Fall time	t_R/t_F		50/35		ns
Spectral bandwidth (FWHM)	$\lambda\Delta$		23		nm

*Measured on bare chip on TO-18 header

Drawing & Dimensions



All dimensions in μm