



SPL445-3W-100M

- Blue Pigtailed Laser Diode
- 450 nm, 3 W
- 105 μm Fiber
- multi mode



Description

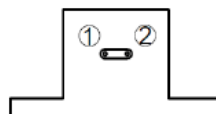
SPL445-3W-100M is a blue pigtailed multi mode laser diode, typically emitting at 450 nm with an output power of 3 W. It comes in a coaxial package with **105 μm multi mode fiber** and FC/PC connector, without monitor photodiode, and **preinstalled heatsink** (see drawing on page 2).

Electrical Connection

Pin Configuration*

Pin #	Function
Pin 1	LD cathode
Pin 2	LD anode

Bottom View



* subject to change

Maximum Rating ($T_{\text{CASE}} = 25^{\circ}\text{C}$)

Parameter	Symbol	Values		Unit
		Min.	Max.	
Reverse Current	I_R		80	mA
Operating Temperature	T_{OPR}	0	+ 60	$^{\circ}\text{C}$
Storage Temperature	T_{STG}	- 40	+ 85	$^{\circ}\text{C}$
Soldering Temperature (max. 3s)	T_{SOL}		+ 260	$^{\circ}\text{C}$

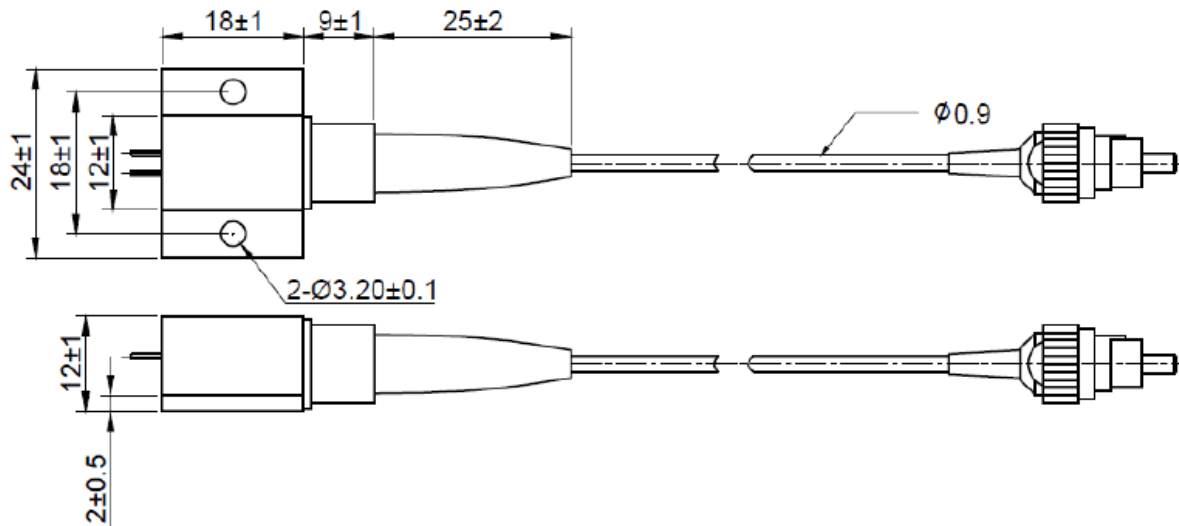


Electro-Optical Characteristics ($T_{\text{CASE}} = 25^{\circ}\text{C}$)

Parameter	Symbol	Values			Unit
		Min.	Typ.	Max.	
Peak Wavelength	λ_P	440	450	465	nm
Spectral Width (FWHM)	$\Delta\lambda$		3.0		nm
Output Power	P_O		3.0		W
Operating Voltage	V_F		4.5	5.5	V
Threshold Current	I_{th}		0.2	0.5	A
Operating Current	I_F		3.0	3.3	A
Fiber Specification	core		105		μm
	connector		FC/PC		
	length		80		cm



Outline Dimensions



all dimensions in mm

© All Rights Reserved

The above specifications are for reference purpose only and subjected to change without prior notice